

## SCREWLESS TYPE TERMINAL BLOCK – ETB65 SERIES



SCREWLESS TYPE

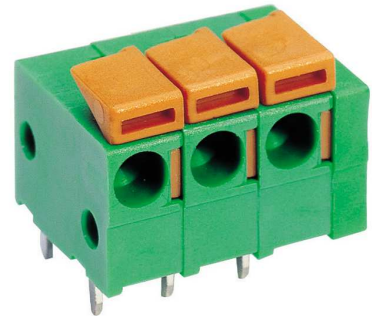
PITCH=5.08mm

### ■ FEATURES

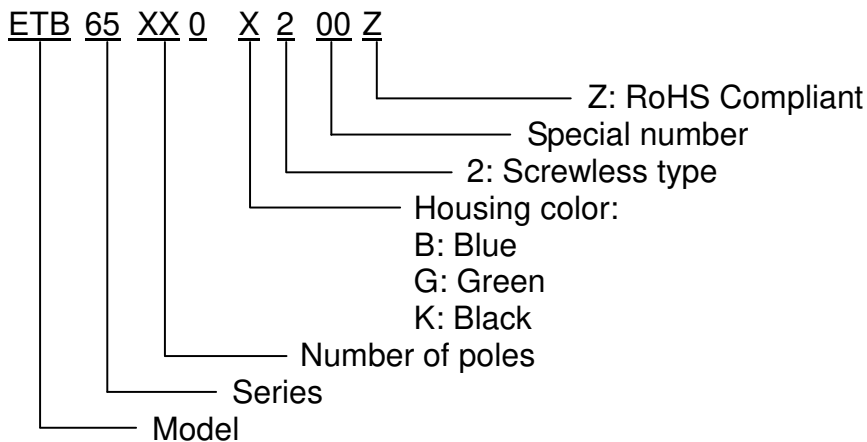
- Easy to assemble for any number of positions
- End stackable without any loss of P.C.B. space
- UL 94V-0 grade fire retardant engineering plastic used for the housing
- Be capable of clamping a wide range of wire diameters
- Screwless design can reduce time for connecting wire

### ■ SPECIFICATIONS

- Pitch 5.08mm
- Wire range 24~14 AWG (2.5mm<sup>2</sup>)
- No. of pole per block 2P to 16P
- Rating 10 Amp, 300 VAC
- Housing PA66
- Terminals Tin plated over Brass
- Springs Stainless Steel
- Push button PA66
- Operating temperature -30°C ~+110°C  
(includes temperature rise limit)
- Stripping length 9mm
- UL Approval 300V, 10A, 24~14 AWG



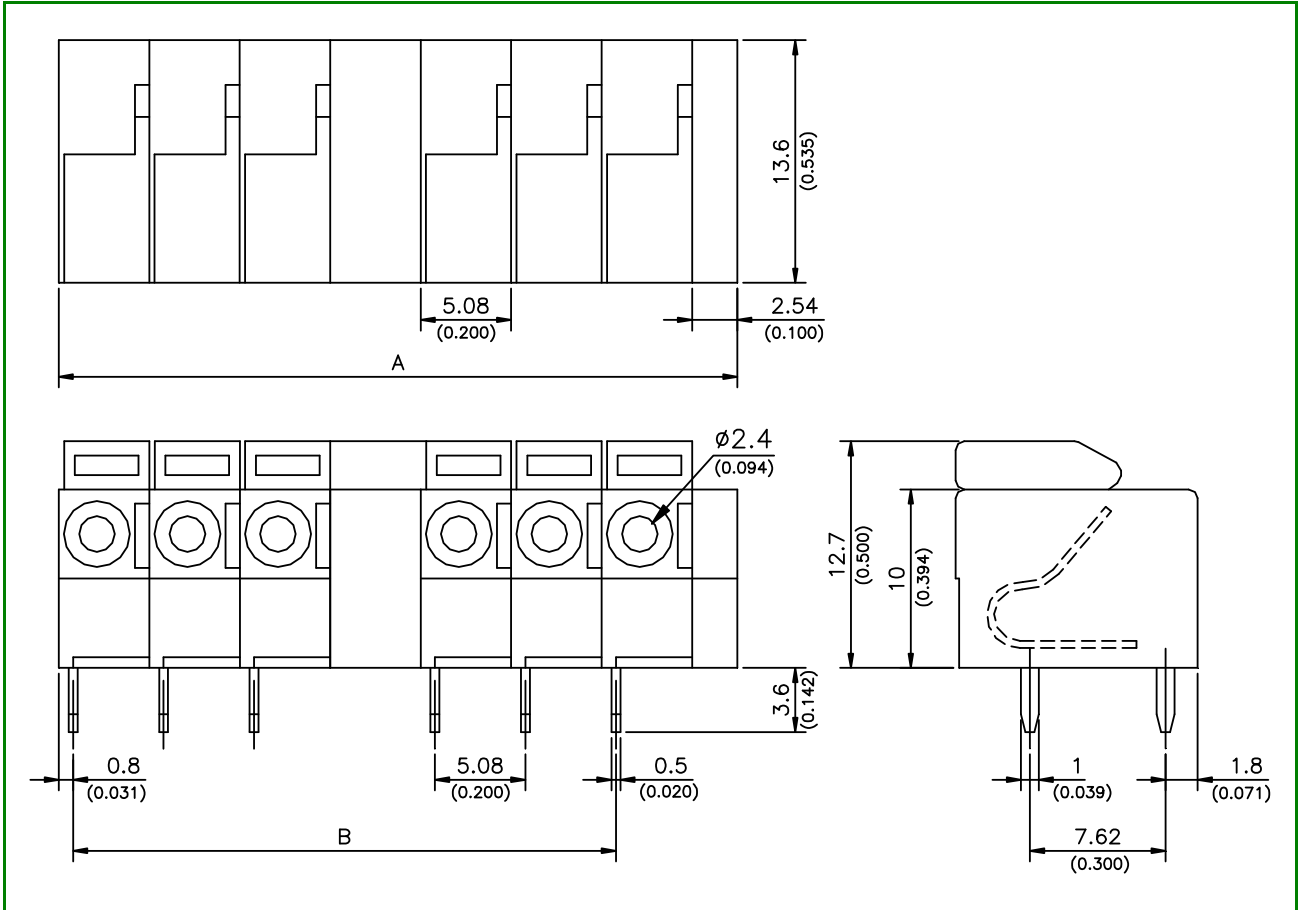
### ■ PART NUMBERING SYSTEM



# SCREWLESS TYPE TERMINAL BLOCK - ETB65 SERIES



## ■ DRAWING



POLE DIM.	2	3	4	5	6	7	8	9	10	11	12	13	14	15	16
A	12.70 (0.500)	17.78 (0.700)	22.86 (0.900)	27.94 (1.100)	33.02 (1.300)	38.10 (1.500)	43.18 (1.700)	48.26 (1.900)	53.34 (2.100)	58.42 (2.300)	63.50 (2.500)	68.58 (2.700)	73.66 (2.900)	78.74 (3.100)	83.82 (3.300)
B	5.08 (0.200)	10.16 (0.400)	15.24 (0.600)	20.32 (0.800)	25.40 (1.000)	30.48 (1.200)	35.56 (1.400)	40.64 (1.600)	45.72 (1.800)	50.80 (2.000)	55.88 (2.200)	60.96 (2.400)	66.04 (2.600)	71.12 (2.800)	76.20 (3.000)